

Tell Hizzin (Lebanon): Publication Project

This publication project is a collaborative work between Prof. Helen Sader and Prof. Hermann Genz

Description

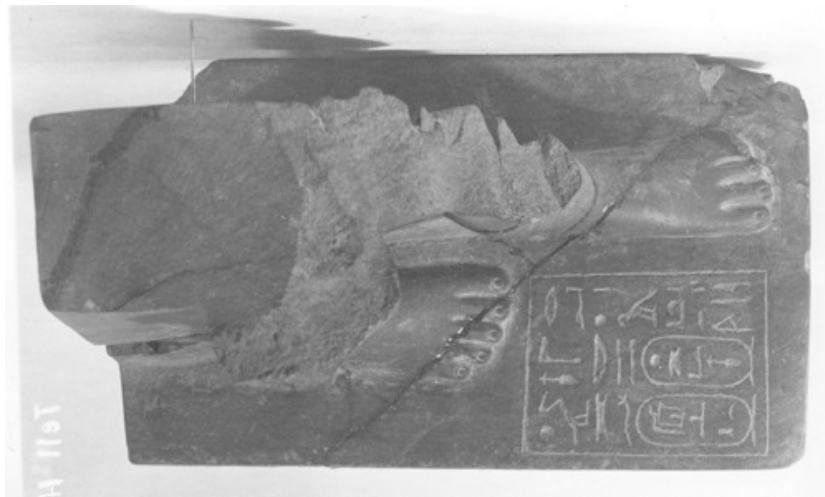
Tell Hizzin, situated in the Bekaa Plain about 11 km south-west of Baalbek, is one of the tell sites in Lebanon. In 1949 and 1950 excavations on a considerable scale have been undertaken by Emir Maurice Chéhab on behalf of the Direction Générale des Antiquités. Unfortunately the results were never published except for very brief notes. A considerable amount of material from these excavations has been relocated in the storerooms of the Direction Générale des Antiquités, ranging in date from the Early Bronze Age IV to the Ottoman Period. Of particular interest are a larger number of Middle Bronze Age burials and two fragmentary Egyptian Middle Kingdom statues. Although little contextual information is available due to the fact that the documentation was lost, the publication of the material will greatly enhance our understanding of the role of the Bekaa in the history of Lebanon, as it complements considerably the results gained from the excavations at Kamid el-Loz, Tell el-Ghassil and Baalbek.



Tell Hizzin during the excavations in 1949-1950



Tomb 4 in Tranchée 7 during the excavations



Statue of Sebekhotep IV

Collaborators:

Alexander Ahrens, M.A. (German Archaeological Institute Damascus)
Dr. Bettina Fischer-Genz (German Archaeological Institute, Orient Branch, Berlin):
Post-Iron Age Artifacts

Publications:

Genz, H. and Sader, H.
In press Tell Hizzin: Digging up new material from an old excavation. *Bulletin d'Archéologie et d'Architecture Libanaises* 12.
Sader, H.
In press "Tell Hizzin in the Biqā': New Evidence from an Old Excavation". *Proceedings of the 6th International Conference on the Archaeology of the Ancient Near East*, University of Rome-Italy.