

**FACULTY OF AGRICULTURAL AND FOOD SCIENCES
AGRICULTURAL RESEARCH AND EDUCATION CENTER BYLAWS**

Table of Contents

[Article I - AREC Organization and Facilities](#)

[Article II - AREC Organization Chart](#)

[Back to Top](#)

**(To download this policy in Word format, [click here](#))
For any comments, feedback, or query, please contact: policies@aub.edu.lb.
Last updated on: September 25, 2003**

Article I - AREC Organization and Facilities

The Agricultural Research and Education Center (AREC) is located at Haush-Sneid in the Beka'a Valley, 80 kilometers from Beirut, 25 kilometers northeast of Zahle and 14 kilometers southwest of Baalbeck. It includes a research farm, an agricultural library, a clinic, several staff resident houses, student dormitories, classrooms, laboratories, a weather station, and recreation and sport facilities, all run by a body of qualified personnel (see accompanying chart). Cattle, sheep, goat and poultry, are maintained with modern equipment and housing. A good portion of the land is devoted to research and demonstration in the production of fruits, vegetables, cereals, forage and various other field crops, while the rest of the farm is used to produce locally adapted crops. The 100-hectare farm provides excellent opportunities for students to obtain practical experience in various sectors of agriculture.

The geographic location and the tranquil atmosphere make AREC an ideal place for workshops and seminars. A large acclimatized lecture hall equipped with screens, projectors, and PC's, is located on the second floor of the New Edgecombe Hall Building, and is available for such purposes.

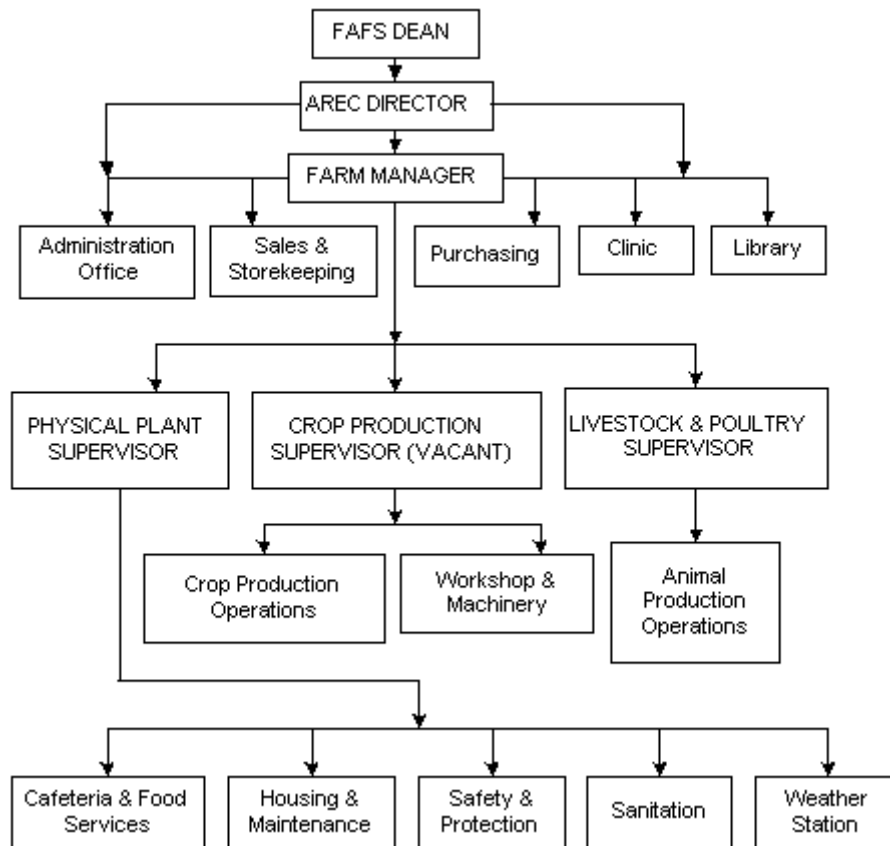
Main campus university rules and regulations are applied at AREC. Because of its remote location, the center offers board and lodging to faculty members at FAFS and at AUB at large.

In addition, the farm surplus produce is available for AUB community at AREC and on the main campus, and includes fresh vegetables, eggs, and broilers at convenient prices and in season.

Detailed information can be obtained by calling 961-8-345151 or 961-3-334319, or faxing 961-8-345142.

[Back to Top](#)

Article II - AREC Organization Chart



[Back to Top](#)