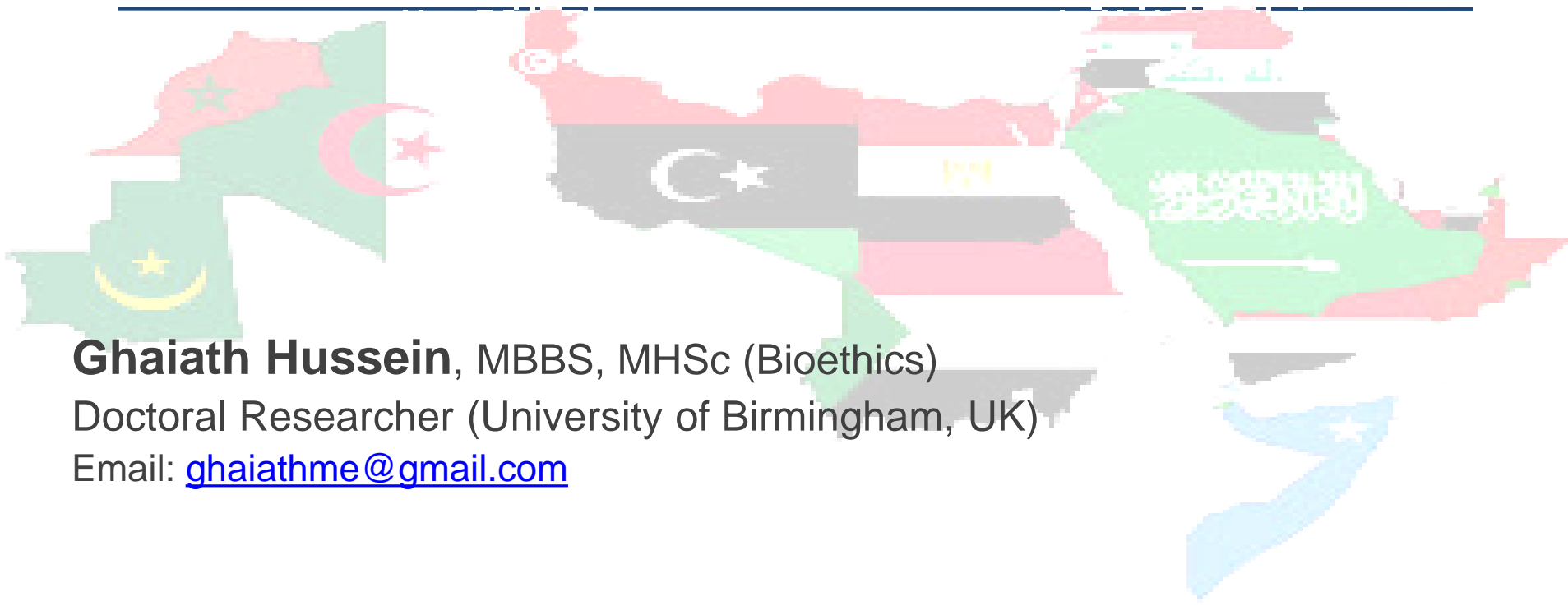


The Ethical Implications of the Socio-political Conditions in the Arab Countries on the Research Involving Arab Women



Ghaiath Hussein, MBBS, MHSc (Bioethics)

Doctoral Researcher (University of Birmingham, UK)

Email: ghaiathme@gmail.com

Disclosure

- I have no conflicts of interests

Outline

- Overview on some development indicators related to the women in Arab countries
- The range of ethical issues related to the participation of women in research
- How do the socio-economical conditions ethically impact the Arab women's participation in research



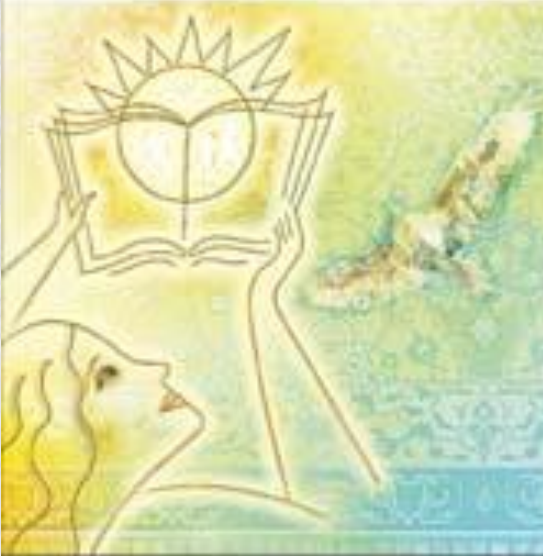
Arab Human Development Report 2009

Challenges to Human Security in the Arab Countries

برنامج الأمم المتحدة الإنمائي
التعاون العربي الأمتي والاقتصادي والاجتماعي
برنامج الخليج العربي لدعم منظمات الأمم المتحدة الإنمائية
**تقرير التنمية الإنسانية العربية
للعام 2005**
تحت إشراف: الميراثة العبدان العبدان



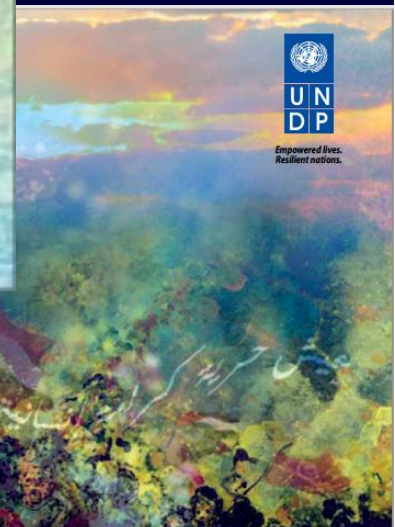
United Nations Development Programme
Middle East and North Africa Regional Office
Special Representative for the Middle East and North Africa
**ARAB HUMAN
DEVELOPMENT
REPORT 2005**
Towards the State of Welfare in the Arab World



Peace
Justice
Sustainable
Security
Gender
Military intervention



Empowered lives.
Resilient nations.

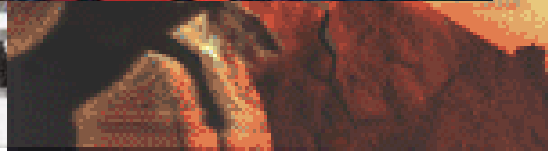


United Nations Development Programme

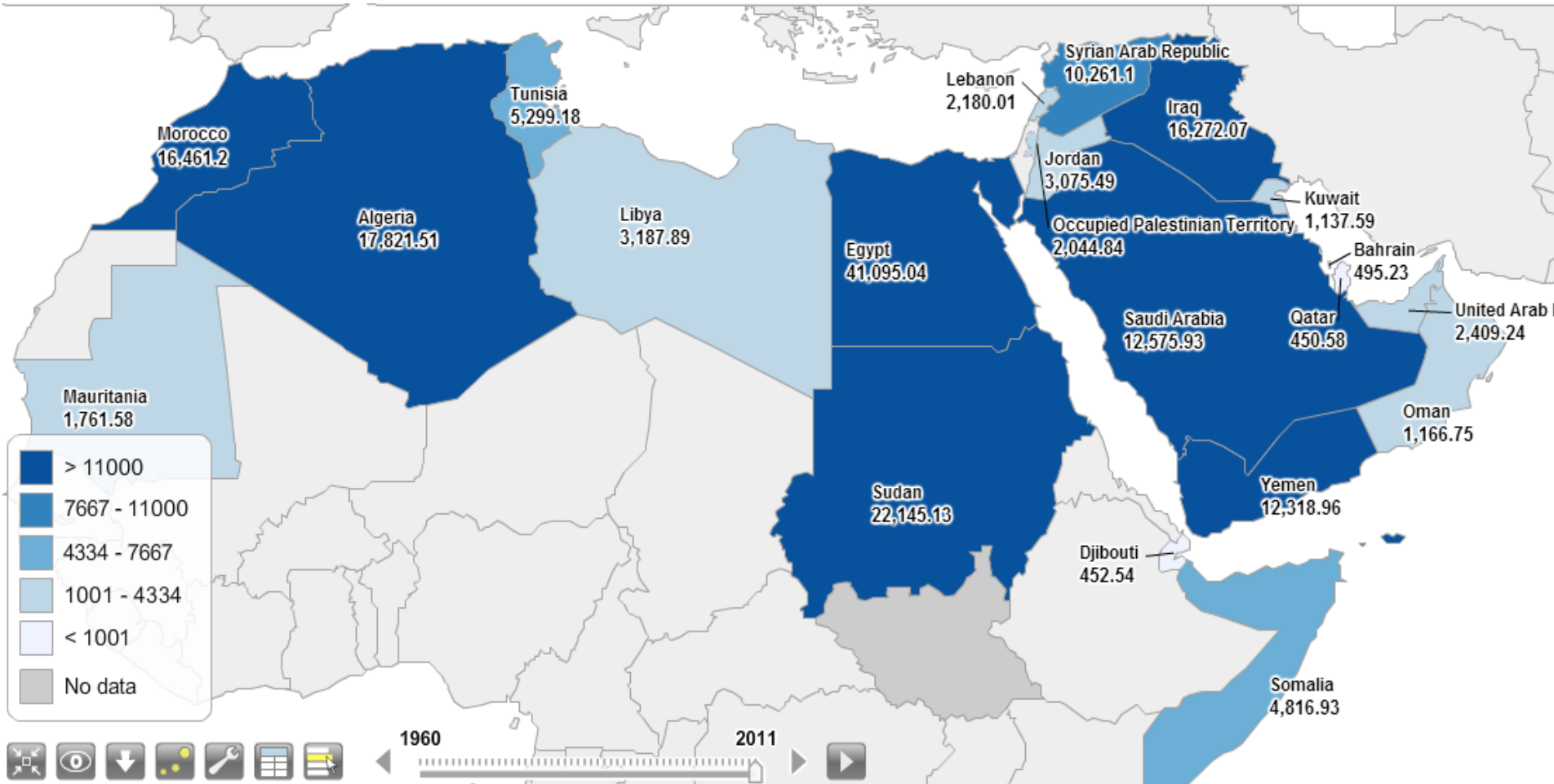


ARAB DEVELOPMENT CHALLENGES REPORT 2011

TOWARDS THE DEVELOPMENTAL STATE IN THE ARAB REGION



How many women in the Arab region?



Source: [Arab Human Development Reports](http://www.arab-hdr.org/data/map/) (<http://www.arab-hdr.org/data/map/>)

Gender inequality Index

- The **Gender Inequality Index (GII)** is a new index for measurement of gender disparity
- this index is a composite measure which captures the loss of achievement, within a country, due to [gender inequality](#), and
- uses three dimensions to do so: [reproductive health](#), [empowerment](#), and [labor market](#) participation.

GII in Arab Countries

