



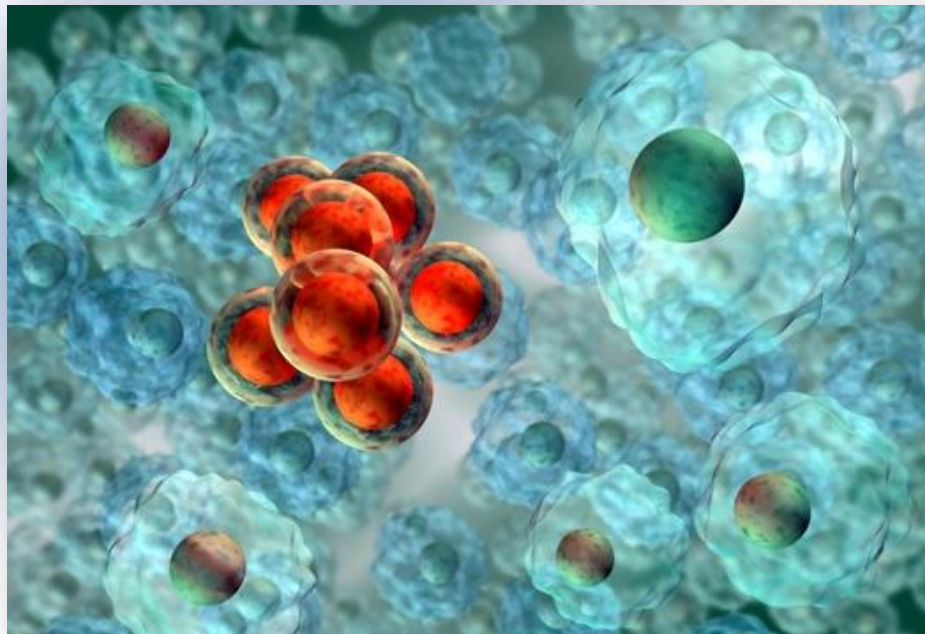
Faculty of Medicine
Salim El-Hoss Bioethics and Professionalism Program
المركز الطبي في الجامعة الأميركية في بيروت
برنامج سليم الحوص للأخلاقيات الاحيائية والاحتراف



On the occasion of *Global Medical Ethics Day*
The Salim El-Hoss Bioethics and Professionalism Program at the
American University of Beirut, Faculty of Medicine
In joint sponsorship with Cleveland Clinic
announces its 3rd regional conference

Stem Cell Research: Current Controversies

September 14-15, 2012
Golden Tulip Hotel, Beirut, Lebanon



Syllabus

GENERAL INFORMATION

Program Overview

This activity is the third regional conference held on the occasion of Global Medical Ethics Day, which falls on September 17 of every year (as per the AMA). It aims at bringing healthcare workers/bioethicists from the region together to discuss issues pertaining to bioethics.

Objectives

As a result of attending this course, the participant will be able to do the following:

- ✓ Provide an update on scientific research on human stem cells
- ✓ Explore the challenges and opportunities for stem cell research in the region
- ✓ Explore the ethical and clinical consequences of anticipated scientific breakthroughs in stem cell research
- ✓ Consider the religious consequences of scientific breakthroughs in stem cell research

Target Audience

This annual scientific meeting has been designed for physicians, nurses, trainees, and researchers in all specialties. It is also designed for the religious communities, and policy makers.

Venue

The Stem Cell Research: Current Controversies Conference will be held at the Golden Tulip Hotel, Beirut, Lebanon.

Accreditation Statement

This activity has been planned and implemented in accordance with the Essential Areas and policies of the Accreditation Council for Continuing Medical Education through the joint sponsorship of The Cleveland Clinic Foundation Center for Continuing Education and American University of Beirut Medical Center. The Cleveland Clinic Foundation Center for Continuing Education is accredited by the ACCME to provide continuing medical education for physicians.

The Cleveland Clinic Foundation Center for Continuing Education designates this live activity for a maximum of *7.25 AMA PRA Category 1 Credits™*. Physicians should claim only the credit commensurate with the extent of their participation in the activity.

Participants claiming CME credit from this activity may submit the credit hours to the American Osteopathic Association for Category 2 credit.

Lebanese Order of Physicians Statement

The Current Controversies in Research Ethics course also complies with the Lebanese Order of Physicians Continuing Medical Education guidelines.

Evaluation Form and CME Certificate

The evaluation and CME certificates are available online. In order to receive *AMA PRA Category 1 Credits™*, please go to www.ccfcm.org/myCME to complete the course evaluation and to print your CME certificate. Once you enter the site, please enter **021347**. The above code is active for 30 days following the symposium.

User Instructions:

If you are a first-time user of “MyCME,” you will need to create a six-digit password comprised of any combination of letters and/or numbers. This will become your permanent log in for future Cleveland Clinic “MyCME” programs.

1. Log in to www.ccfcm.org/myCME
2. Click on “New User?” located under the login box
3. Complete all the fields in the form and click on “Create Account”
4. Click on “Click Here To Login”
5. Login using the information you just provided in the registration form
6. In the “Regularly Scheduled Series” box, enter the code “**021347**”
7. Complete all the fields and hit “submit”
8. Your official CME certificate will appear. Please print and keep with your permanent files.

Please note: Be sure to print your CME certificate and keep for your files. This is your permanent record; no other certificate will be generated.

DISCLAIMER

The information in this educational activity is provided for general medical education purposes only and is not meant to substitute for the independent medical judgment of a physician relative to diagnostic and treatment options of a specific patient's medical condition. The viewpoints expressed in this CME activity are those of the authors/faculty. They do not represent an endorsement by The Cleveland Clinic Foundation. In no event will The Cleveland Clinic Foundation be liable for any decision made or action taken in reliance upon the information provided through this CME activity.

Copyright © 2012 The Cleveland Clinic Foundation. All Rights Reserved.

FACULTY DISCLOSURE

In accordance with the Standards for Commercial Support issued by the Accreditation Council for Continuing Medical Education (ACCME), The Cleveland Clinic Foundation Center for Continuing Education requires resolution of all faculty conflicts of interest to ensure CME activities are free of commercial bias.

The following faculty have indicated they have no relationship which, in the context of their presentation(s), could be perceived as a potential conflict of interest:

Thalia Arawi, PhD
Aida Al Aqeel, MD, FRCP, FACMG
Maysa Al-Husaini, M.D. FRCPPath
Father Charbel Chlela
Hamid Hussain, MD
Ghaiath Hussein, PhD

Insoo Hyun, PhD
Samia Khoury, MD
George Abi Saad, MD
Hany Sleem, MD
Jeremy Sugarman, MD, MPH, MA
Bassem I Yamout, MD, FAAN

Activity Directors:

Thalia Arawi, PhD
Founding Director,
Salim El-Hoss Bioethics & Professionalism Program
Clinical Bioethicist
Vice Chair, Medical Center Ethics Committee
American University of Beirut
Faculty of Medicine
Beirut, Lebanon

George Abi Saad, MD
Director
Continuing Medical Education Office
Associate Professor of Clinical Surgery
American University of Beirut
Beirut, Lebanon

Faculty

International Faculty

Aida Al Aqeel, MD, FRCP, FACMG
Senior Consultant Paediatric Medical Geneticist and Endocrinologist
Department of Paediatrics, Riyadh Military Hospital
Principal Scientist, King Faisal Specialist Hospital and Research Centre
Adjunct Professor, American University of Beirut
Member, ISSCR Ethics and Public Policy Committee
Riyadh, KSA

Maysa Al-Husaini, M.D. FRCPath
Consultant
Histopathologist/ Neuropathologist
King Hussein Cancer Center
Amman, Jordan

Hamid Hussain, MD
Professor
Community Medicine
Dubai Health Authority
Dubai, UAE

Ghaiath Hussein, PhD
Associate Professor
Biomedical Ethics
Faculty of Medicine, King Fahd Medical City
Riyadh, KSA

Insoo Hyun, PhD
Associate Professor
Department of Bioethics
School of Medicine
Case Western Reserve University
Cleveland, Ohio, USA

Hany Sleem, MD
Chair
Institutional Review Board of Medical Research
Egyptian Society of Healthcare Development
Cairo, Egypt

Jeremy Sugarman, MD, MPH, MA
Harvey M. Meyerhoff Professor of Bioethics and Medicine
Johns Hopkins Berman Institute of Bioethics
Baltimore, Maryland, USA

Local Faculty

Father Charbel Chlela,
Catholic Church
Beirut, Lebanon

Samia Khoury, M.D
Professor of Neurology
Director of the Abu-Haidar Institute for Neuroscience
Neurology
American University of Beirut Medical Center
Beirut, Lebanon

Bassem I Yamout, MD, FAAN
Professor of Clinical Neurology
Director, Multiple Sclerosis Center clinical Research
American University of Beirut Medical Center
Beirut, Lebanon

PROGRAM AGENDA:

Friday September 14, 2012

| | |
|-------------------|--|
| 08:30am - 09:00am | Registration |
| 09:00am - 09:10am | Welcome Dr. Samia Khoury on behalf of Dr. Mohamed H. Sayegh |
| 09:10am - 09:15am | Introduction Dr. Thalia Arawi |
| 09:15am - 10:10am | Ethical Challenges in Stem Cell Research and Treatment Dr. Jeremy Sugarman |
| 10:10am - 10:15am | Questions & Answers |
| 10:15am - 11:10am | Ethical issues in stem cell-based clinical trials. Dr. Insoo Hyun |
| 11:10am - 11:15am | Questions & Answers |
| 11:15am - 11:30am | Stem cells: The Catholic Church defending its moral beliefs Father Charbel Chlela |
| 11:30am - 11:35am | Questions & Answers |
| 11:35am - 12:05pm | Coffee Break |
| 12:05pm - 12:55pm | The ethics of stem cell-based animal research Dr. Insoo Hyun |
| 12:55pm - 13:00pm | Questions & Answers |
| 13:00pm - 13:30pm | Stem cell in the Middle East, an Islamic perspective Dr. Aida Al Aqeel |
| 13:30pm - 13:35pm | Questions and Answers |
| 13:35pm - 14:00pm | Panel Discussion: Dr. Jeremy Sugarman, Dr. Insoo Hyn, Dr. Aida Aqeel |
| 14:00pm - 15:30pm | Lunch |

Saturday September 15, 2012

| | |
|-------------------|---|
| 09:00am - 09:30am | Stem cell in the Middle East, Challenges and Opportunities Dr. Aida Al Aqueel |
| 09:30am - 09:40am | Questions and Answers |
| 09:40am - 10:00am | Are Muslims into stem cell research? Review of current available literature Dr. Maysa Al-Husaini |
| 10:00am - 10:05am | Questions and Answers |
| 10:05am - 10:25am | An Islamic Approach to Ethical Analysis of the Ethical Issues in stem Cell Research Dr. Ghaiath Hussein |
| 10:25am - 10:30am | Questions and Answers |
| 10:30am - 10:50am | Ethical and Practice Issues in Stem Cell Research and Therapy-Egyptian Situation Dr. Hany Sleem |
| 10:50am - 10:55am | Questions and Answers |
| 10:55am - 11:30am | Coffee Break |
| 11:30am - 11:50am | Stem Cells in Multiple Sclerosis Dr. Bassem Yamout |
| 11:50am - 11:55am | Questions and Answers |
| 11:55am - 12:15pm | Ethical and Regulatory challenges of stem cell research and applications at healthcare system in UAE Dr. Hamid Hussain |
| 12:15pm - 12:20pm | Questions and Answers |

POSTER PRESENTATIONS (Non CME)

| | |
|-------------------|---|
| 12:20pm - 12:35pm | Assessment of self-perceived risk-benefit decision patterns by research ethics committee members in Egypt: an explanatory study Dr. Samia Rizk |
| 12:35pm - 12:40pm | Awareness of the Therapeutic benefits of umbilical cord increases willingness to donate Dr. Iyad Ayoub |
| 12:40pm - 12:55pm | Use of a Self-Assessment Tool in Assessing the Functioning of research Ethics Committee in Developing Countries Ms. Rola Jaafar |
| 12:55pm - 14:30pm | Lunch |

Organized by:

Continuing Medical Education Office
American University of Beirut
P.O. Box 11-236 Riad El Solh
Beirut 1107 2020
Lebanon
Tel: +961-1-350 000 ext 4717/8
Fax: +961-1-744 467
Email: cme@aub.edu.lb
Web: <http://cme.aub.edu.lb>



AIDA IBRAHIM M. AL AQEELMD, DCH, FRCP (Edin/Lond), FACMG
Senior Consultant Paediatric Medical Geneticist and Endocrinologist
Principal Scientist, King Faisal Specialist Hospital and Research Centre
Adjunct Professor, American University of Beirut
Department of Paediatrics, Riyadh Military Hospital
Riyadh, KSA

Dr. Aqeel graduated from Kuwait University, with honors; had three fellowships in Genetic and Metabolic Disorders including molecular genetics fellowship; obtained the American Board of Medical Genetics in 1999, has been awarded several awards including, the Outstanding Investigator Award from the American Federation of Medical Research, the Science Award from European Society of Human Genetics, and the Outstanding Physician Award from the 10th International Congress of Inborn Errors of Metabolism, Chiba, Japan. Dr. Aqeel was also Awarded the Distinction Medal by HRH Prince Sultan Bin Abdulaziz, the Crown Prince of Saudi Arabia; the Distinctive Arab Female Scientist Prize by the Arabian Gulf University, Bahrain, the King Faisal Distinction Wissam by The Custodian of the Two Holy Mosques, King Abdullah Bin AbdulAziz; and the Prince Sultan International Award for the Pioneers of Saudi Medical Innovations and Creativity.

She is the first Saudi Geneticist and Metabolist and has been on the editorial board of several national and international journals, including the editorial board of American Journal of Bioethics, Cardio genetics journal

She has many novel discoveries in Genetics and has published over 70 manuscripts on neurometabolic genetic disorders. Dr. Aqeel is the co-author for two books including Atlas of metabolic diseases, Arnold Health Sciences; and Human Genomics and Hereditary Disorders in the developing world, Oxford University Press.



Insoo Hyun, PhD
Associate Professor
Department of Bioethics
School of Medicine
Case Western Reserve University
Cleveland, Ohio, USA

Insoo Hyun is Associate Professor of Bioethics and Philosophy at Case Western Reserve University School of Medicine in Cleveland, Ohio. His research interests include ethical and policy issues in stem cell research, research ethics and informed consent, and medical decision-making. In 2005, he was awarded a Fulbright Research Award by the U.S. Department of State to study the ethical, legal, and cultural dynamics of human research cloning in South Korea. In 2006 he chaired the Subcommittee on Human Biological Materials Procurement for the International Embryonic Stem Cell Guidelines Task Force, a multinational, multidisciplinary working group for the ISSCR (International Society for Stem Cell Research). In 2007 he served as Co-Chairperson of the ISSCR Task Force on International Guidelines for the Clinical Translation of Stem Cells. He is also the past Chairperson of the ISSCR's Ethics and Public Policy Committee. Dr. Hyun received his BA and MA in Philosophy from Stanford University and his PhD in Philosophy from Brown University. Dr. Hyun's bioethics articles have appeared in *Science*, *Nature*, *Cell Stem Cell*, *The Hastings Center Report*, and *The Kennedy Institute of Ethics Journal*, among many others. His forthcoming book *Bioethics and the Future of Stem Cell Research* is being published by Cambridge University Press.



Jeremy Sugarman, MD, MPH, MA
Harvey M. Meyerhoff Professor of Bioethics and Medicine
Johns Hopkins Berman Institute of Bioethics
Baltimore, Maryland, USA

Jeremy Sugarman, MD, MPH, MA is the Harvey M. Meyerhoff Professor of Bioethics and Medicine, professor of medicine, professor of Health Policy and Management, and deputy director for medicine of the Berman Institute of Bioethics at the Johns Hopkins University. He is an internationally recognized leader in the field of biomedical ethics with particular expertise in the application of empirical methods and evidence-based standards for the evaluation and analysis of bioethical issues. Dr. Sugarman is the author of over 200 articles, reviews and book chapters and has also edited or co-edited four books. Dr. Sugarman consults and speaks internationally on a range of issues related to bioethics. Dr. Sugarman served on the Maryland Stem Cell Research Commission. He is a member of the Scientific and Research Advisory Board for the Canadian Blood Service, the Ethics and Public Policy Committee of the International Society for Stem Cell Research, and the Board of Directors of PRIM&R (Public Responsibility in Medicine and Research). He is co-chair of the Johns Hopkins' Institutional Stem Cell Research Oversight Committee. In addition, he is chair of the Ethics Working Group of the HIV Prevention Trials Network and is the ethics officer for the Resuscitation Outcomes Consortium. Dr. Sugarman has been elected as a member of the American Society of Clinical Investigation and the Institute of Medicine. He is a fellow of the American Association for the Advancement of Science, the American College of Physicians and the Hastings Center.