



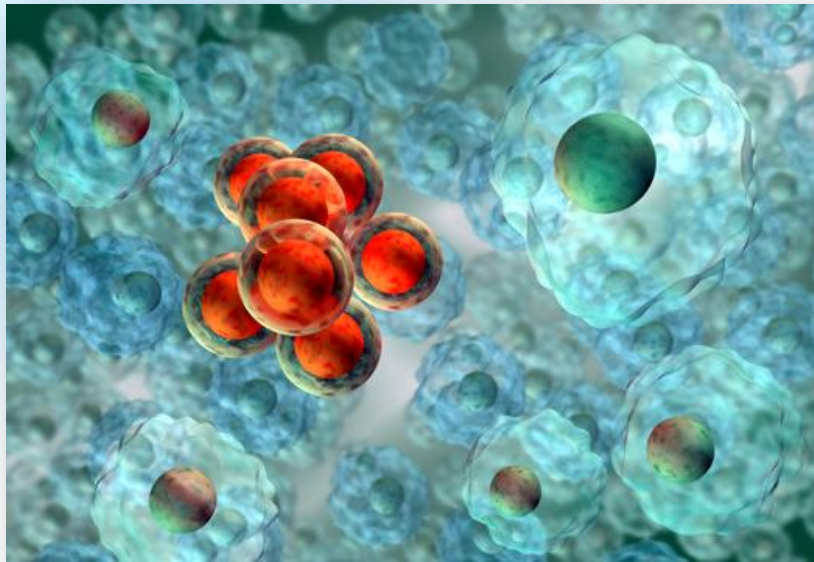
Faculty of Medicine
Salim El-Hoss Bioethics and Professionalism Program
المركز الطبي في الجامعة الأميركية في بيروت
برنامج سليم الحوص للأخلاقيات الاحيائية والاحتراف



On the occasion of *Global Medical Ethics Day*
The Salim El-Hoss Bioethics and Professionalism Program at the
American University of Beirut, Faculty of Medicine
In joint sponsorship with Cleveland Clinic
announces its 3rd regional conference

Stem Cell Research: Current Controversies

September 14-15, 2012
Golden Tulip Hotel, Beirut, Lebanon



Save the Date & Call for Abstracts

GENERAL INFORMATION

Program Overview

This activity is the third regional conference held on the occasion of Global Medical Ethics Day, which falls on September 17 of every year (as per the AMA). It aims at bringing healthcare workers/bioethicists from the region together to discuss issues pertaining to bioethics.

Objectives

As a result of attending this course, the participant will be able to do the following:

- ✓ To provide an update on scientific research on human stem cells
- ✓ Explore the challenges and opportunities for stem cell research in the region
- ✓ Explore the ethical and clinical consequences of anticipated scientific breakthroughs in stem cell research
- ✓ Consider the religious consequences of scientific breakthroughs in stem cell research

Target Audience

This annual scientific meeting has been designed for nurses, physicians, trainees, and researchers in all specialties. It is also designed for the religious communities, and policy makers.

Venue

The Stem Cell Research: Current Controversies Conference will be held at the Golden Tulip Hotel, Beirut, Lebanon.

Call for Abstracts

The scientific committee calls for abstracts in all basic and clinical disciplines. The abstracts will be peer reviewed for quality of research and scientific content. Eligible abstracts include original research, educational or clinical work.

Abstract submission and deadlines

- Electronic submissions to cme@aub.edu.lb will be accepted.
- Submissions must be text attachment following the format below.
- Abstracts must consist of original work that has not been published or presented before September 14th, 2012.
- The deadline for receipt of abstracts is **July 1st, 2012.**

- Abstract disposition notices and the accepted presentation format will be sent by August 10, 2012.

Format

- Full title of paper
- Names of authors: All co-investigators should be listed using full last name and first name. Last name should be capitalized. The principal investigator should be identified with an asterisk and the presenter's name underlined.
- Affiliation by institution and country of principal investigator and presenter
Example: WARD Paul, HAMAD Sami, KAWA Nancy*, RAMI Sani
Dr. Ward: University of Cedars, Lebanon
Dr. Kawa: University of Palms at Honolulu, Hawaii, USA

Body text: Text should be structured in three clear paragraphs: Background / Methods and Results / Conclusion. **Total text should not exceed 200 words.**

This activity has been approved for *AMA PRA Category 1 Credit™*.

Activity Directors:

Thalia Arawi, PhD
Founding Director,
Salim El-Hoss Bioethics & Professionalism Program
Clinical Bioethicist
Vice Chair, Medical Center Ethics Committee
American University of Beirut
Faculty of Medicine
Beirut, Lebanon

George Abi Saad, MD
Director
Continuing Medical Education Office
Associate Professor of Clinical Surgery
American University of Beirut
Beirut, Lebanon

Faculty

International Faculty

Jeremy Sugarman, MD, MPH, MA
Harvey M. Meyerhoff Professor of Bioethics and Medicine
Johns Hopkins Berman Institute of Bioethics

Insoo Hyun, Ph.D.
Associate Professor
Department of Bioethics
School of Medicine
Case Western Reserve University

Aida Al Aqeel, MD, FRCP, FACMG
S.Consultant Paediatric Medical Geneticist and Endocrinologist
(Principal Scientist, King Faisal Specialist Hospital and Research Centre)
Department of Paediatrics, Riyadh Military Hospital

Organizer:

Continuing Medical Education Office
American University of Beirut
P.O. Box 11-236 Riad El Solh
Beirut 1107 2020
Lebanon
Tel: +961-1-350 000 ext 4717/4752
Fax: +961-1-744 467
Email: cme@aub.edu.lb
Web: <http://cme.aub.edu.lb>