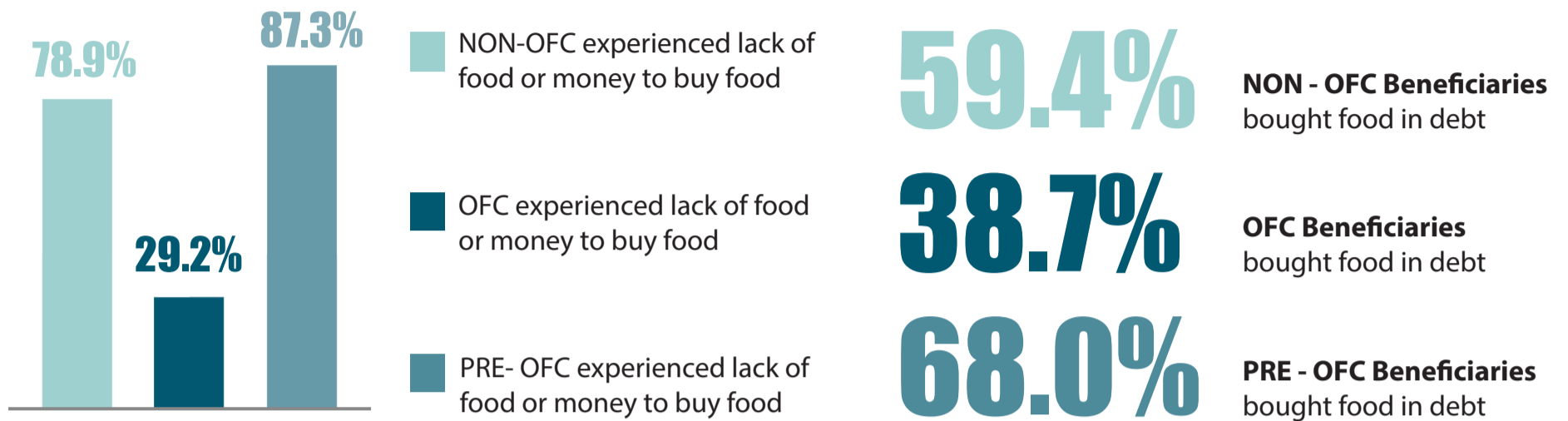


IMPACT OF OCCUPANCY FREE OF CHARGE (OFC) SHELTER MODALITY

BAR ELIAS: IMPROVING LIVELIHOODS

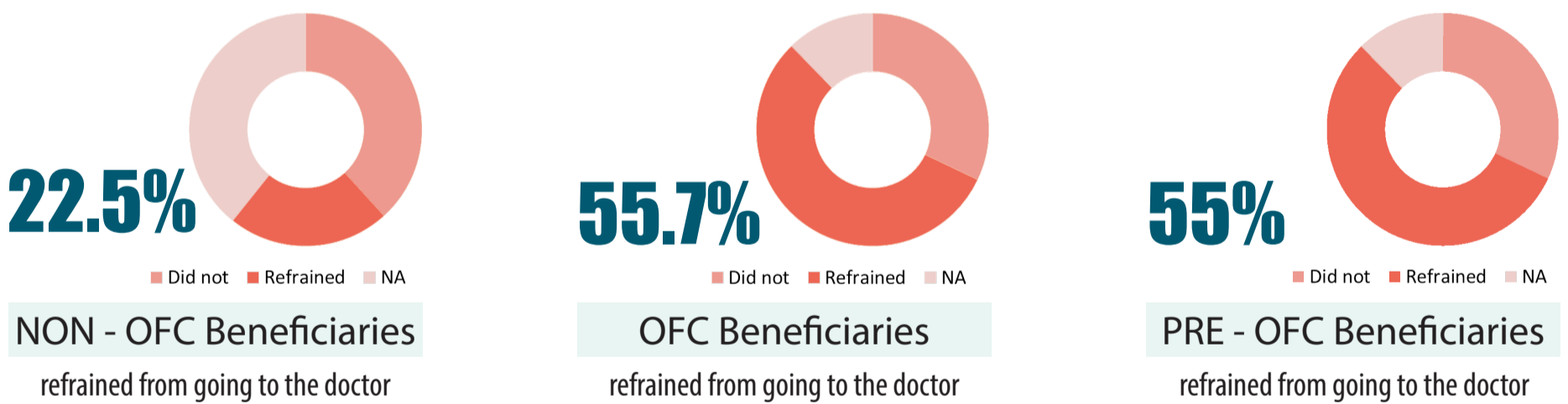
OFC refugee households had better access to food than NON- and Pre-OFC beneficiaries



Refugee households often developed food coping strategies to fulfill their dietary needs



Almost half of the targeted sample refrained from going to the doctor because of cost



OFC refugee households often prioritize access to better food over education of their children

